

# DIAPHRAGM VALVES

SANITARY EQUIPMENT



## REMAX ENERGY Diaphragm Valve

### 3 Way U Type Model: RGDV01

The diaphragm valve is a special type of shut-off valve whose opening and closing member is a diaphragm made of a soft material to separate the valve body cavity from the bonnet cavity and the driving member. RGDV01 model is a manual type sanitary U TYPE diaphragm valve, which is widely used in food, beverage, dairy, brewing, pharmaceutical industries, etc. It is excellent for flow control as well as for open/close duties. Sterile hygienic diaphragm valve is operated either remotely by a pneumatic head or manually by a handle. Suitable for control and on/off tasks of pipeline fluids. The diaphragm separates the lower valve body cavity from the inner cavity of the upper valve cover, so that the valve stem, the valve flap and the like located above the diaphragm are not corroded by the medium, the packing sealing structure is omitted, and the medium leakage is not generated. The compressed air is used to drive the drive screw to move the spool up and down, and at the same time pull the diaphragm up and down to close and open. This model has adjustable minimum flow regulator. RGDV01 has double diaphragm and this feature make it long life. RGDV01 model has more resistance against high pressure and temperature.



### **Ideal for CIP and SIP:**

**Clean in place and steam in place operation may be performed in line without valve disassembly or operation.**

### **In line maintenance:**

The top entry design enable in line maintenance

## Bonnet isolation:

The diaphragm isolates the working parts of the valve from the process media

## Minimal contact surfaces:

The process contact surfaces (body and diaphragm) are minimal, enhancing the ease of cleaning and sterilization

## Product advantages:

diaphragm can be replaced, low maintenance cost;

visual position display switch state;

compact structure, suitable for small spaces;

streamlined flow path, reducing resistance;

kinds of surface polishing technology, no dead angle, in normal no residue at the position;

diaphragm DFA and safety standards authority for UPS, pharmaceutical and food industry predetermined;

resilient sealing member opening and closing the valve body seal groove weir structure with curved design to ensure that there is no internal leakage;

The valve body and the cover are separated by an intermediate diaphragm so that the valve cover, valve stem and the like above the diaphragm are not eroded by the medium.

## Product range:

**Size:** DN8 – DN80

**Pressure Rating:** up to 10 bar

**Temperature Rating:** -50°C — 220 °C

**Connection:** clamp , Butt weld , flanged ,  
quick connection

**Applicable medium:** steam , water , oil

Alcohol , fuel , neutral gas or liquid



<i>Material table</i>	
Body	AISI 316/316L
Diaphragm	Silicone/EPDM/PTFE
Wetted part	Polished stainless steel 316/316L
Handwheel	plastic

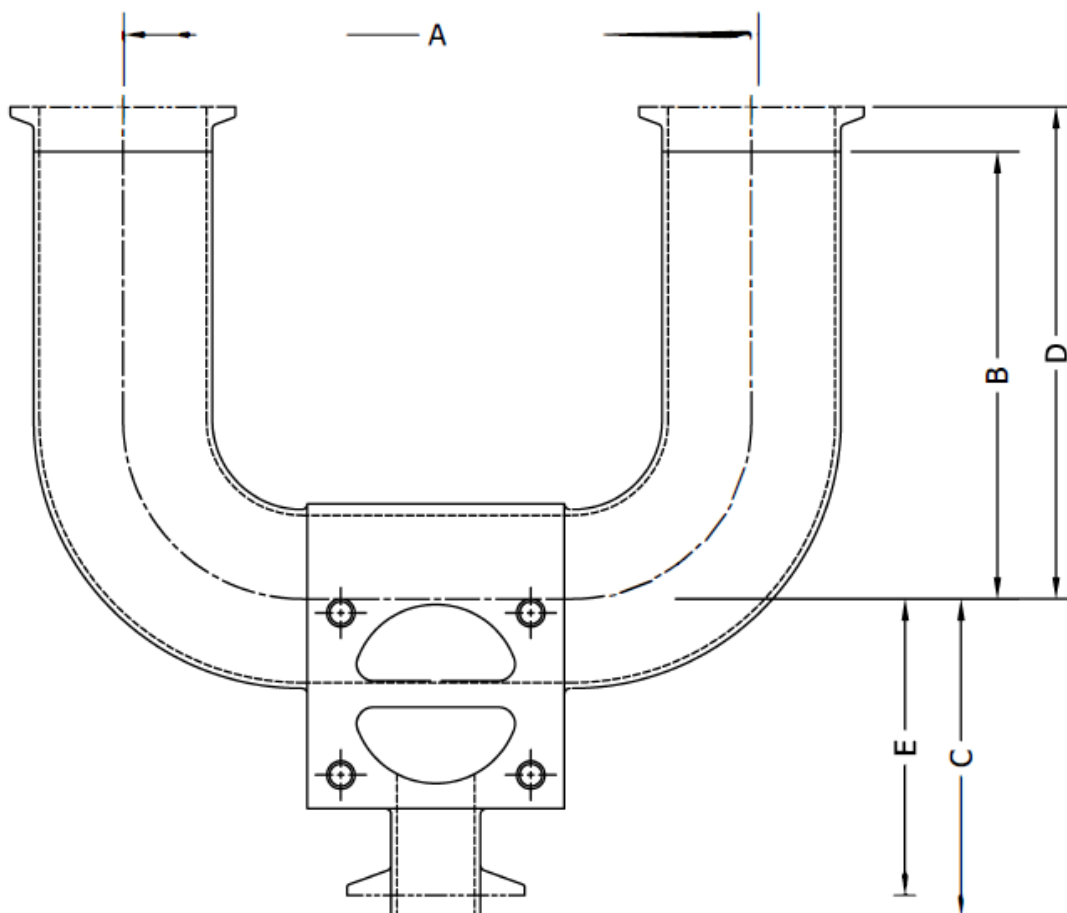


**EPDM**



**PTFE+EPDM**

## ***Dimensions:***



OUTLET VALVE SIZE	RUN SIZE	A	B	C	D	E
1/2"	1/2"	4.50	3.00	2.94	3.50	2.56
1/2"	3/4"	4.50	3.00	3.06	3.50	2.69
1/2"	1"	5.38	3.00	3.19	3.50	2.81
1/2"	1 1/2"	6.88	4.50	3.44	5.00	3.06
1/2"	2"	8.38	5.00	3.69	5.50	3.31
1/2"	2 1/2"	9.88	5.75	3.94	6.50	3.56
1/2"	3"	11.38	6.50	4.19	7.00	3.81
1/2"	4"	14.38	8.50	4.69	9.13	4.31
1/2"	6"	20.75	13.00	5.69	21.75	5.31
3/4"	3/4"	4.50	3.00	3.28	3.50	2.91
3/4"	1"	5.88	3.00	3.41	3.50	3.03
3/4"	1 1/2"	7.38	4.50	3.66	5.00	3.28
3/4"	2"	8.88	5.00	3.91	5.50	3.53
3/4"	2 1/2"	10.38	5.75	4.16	6.50	3.78
3/4"	3"	11.88	6.50	4.41	7.00	4.03
3/4"	4"	14.88	8.50	4.91	9.13	4.53
3/4"	6"	20.88	13.00	5.92	21.75	5.55
1"	1"	6.25	3.00	3.56	3.50	3.18
1"	1 1/2"	7.75	4.50	3.81	5.00	3.43
1"	2"	9.25	5.00	4.06	5.50	3.68
1"	2 1/2"	10.75	5.75	4.31	6.50	3.93
1"	3"	12.25	6.50	4.56	7.00	4.18
1"	4"	15.25	8.50	5.06	9.13	4.68
1"	6"	21.25	13.00	6.09	21.75	5.72
1 1/2"	1 1/2"	8.88	4.50	4.40	5.00	4.02
1 1/2"	2"	10.38	5.00	4.65	5.50	4.27
1 1/2"	2 1/2"	11.88	5.75	4.90	6.50	4.52
1 1/2"	3"	13.38	6.50	5.15	7.00	4.77
1 1/2"	4"	16.38	8.50	5.65	9.13	5.27
1 1/2"	6"	22.38	13.00	6.66	21.75	6.29
2"	2"	11.38	5.00	5.11	5.50	4.73
2"	2 1/2"	12.88	5.75	5.36	6.50	4.98
2"	3"	14.38	6.50	5.61	7.00	5.23
2"	4"	17.38	8.50	6.11	9.13	5.73
2"	6"	23.38	13.00	7.50	21.75	7.13
2 1/2"	2 1/2"	13.13	5.75	6.16	6.50	5.78
2 1/2"	3"	14.63	6.50	6.41	7.00	6.03
2 1/2"	4"	17.63	8.50	6.91	9.13	6.53
2 1/2"	6"	25.88	13.00	7.50	21.75	7.13
3"	3"	16.88	6.50	6.76	7.00	6.14
3"	4"	19.88	8.50	7.26	9.13	6.64
3"	6"	25.88	13.00	9.06	21.75	8.44
4"	4"	21.00	8.50	8.15	9.13	7.27
4"	6"	27.38	13.00	10.44	21.75	9.56
6"	6"	30.88	13.00	13.11	21.75	11.61